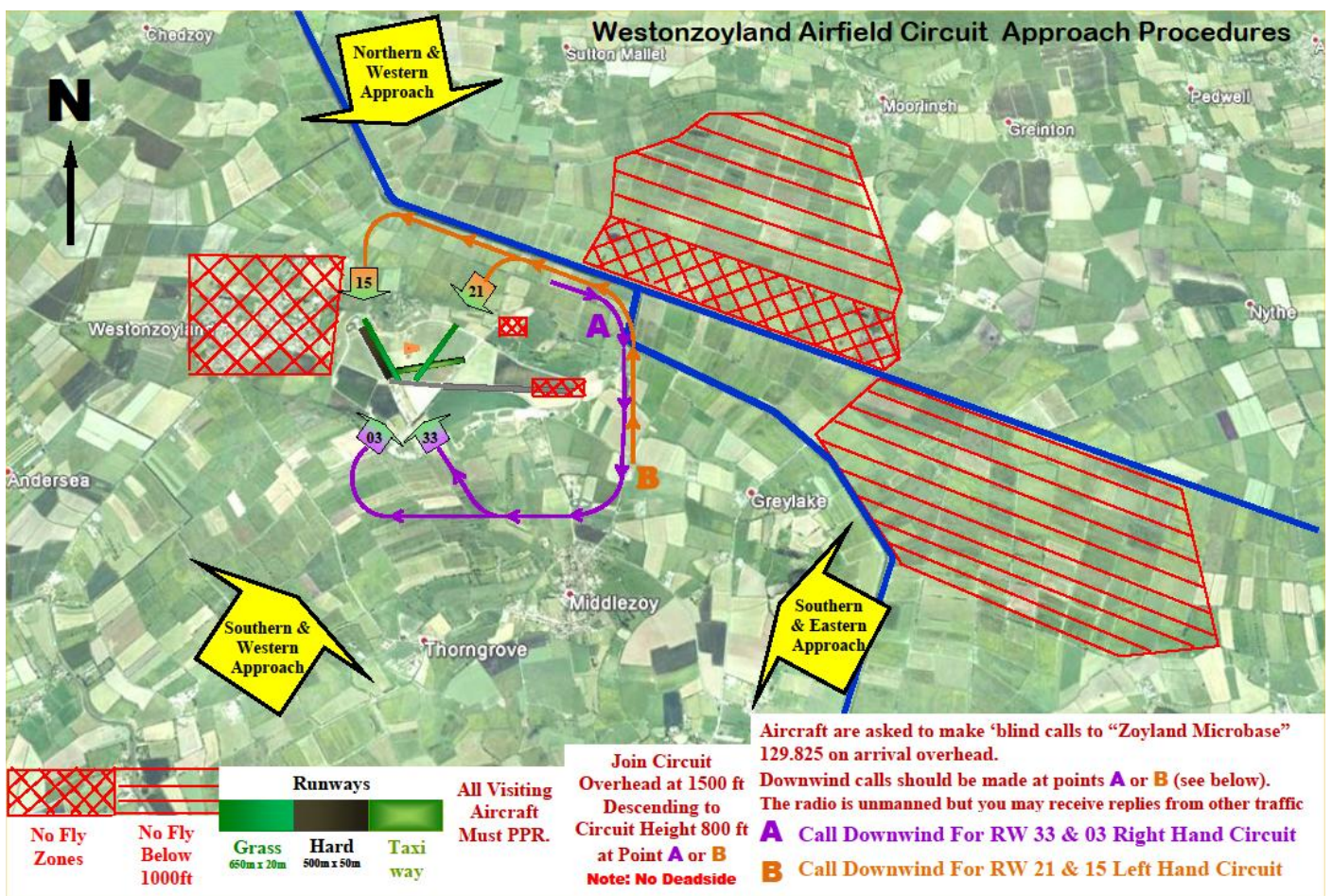
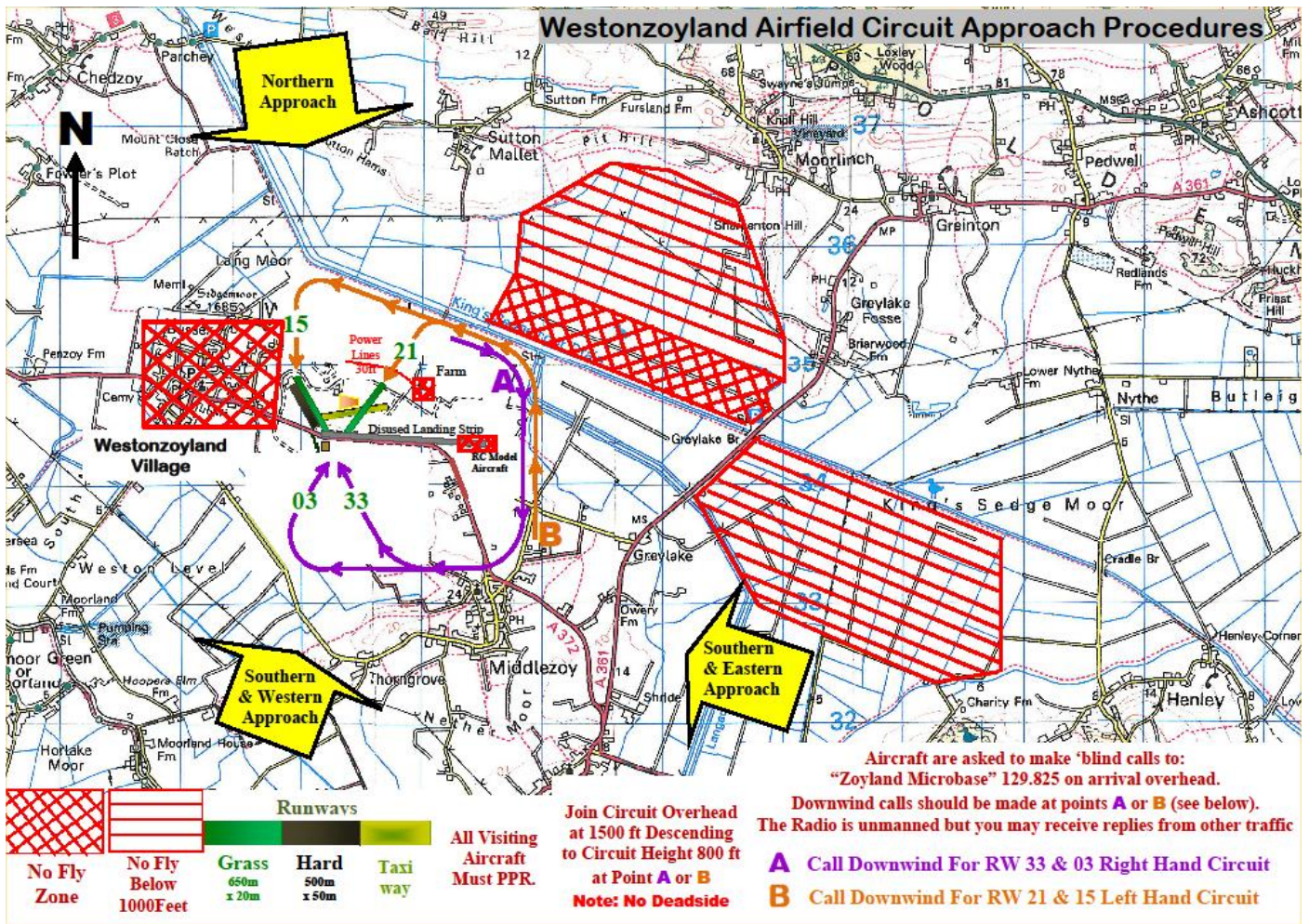


Westonzoyland Airfield Circuit And Joining Procedures



Westonzoyland Airfield Location

Westonzoyland Airfield is situated 3 nautical miles south east of Bridgwater N51.06.33 W002.54.58 at an altitude of 30 feet AMSL. Alternative airfield - Dunkeswell 20 nm SW

Westonzoyland Airfield Operational Details

Westonzoyland airfield's hours of operation for visiting aircraft are Monday to Saturday 09.00 hours to 21.00 hours local time, (or sunset if earlier). The airfield is only open for flights by club members on Sundays when the only runway available is 03 / 21.

Anyone (other than club members) wishing to visit Westonzoyland must first obtain PPR by telephone. Contact Neil Harrison on 07834 543754

Runway directions are **03 / 21** grass and **15 / 33** grass and hard. Windsocks are situated between these two runways on the roof of the old disused ATC building and on the edge of the small pond. Pilots must land at their own discretion and in accordance with normal aviation practice, however runway 15 / 33 grass is the preferred runway if weather /wind conditions are suitable. The airfield joining height is 1500 feet AAL and circuit height 800 feet AAL. All circuits are to the east of the runways i.e. **Right hand on RW 33 and RW 03**, and **Left hand on RW 15 and RW 21**.

Westonzoyland Airfield Joining Procedures

Westonzoyland airfield is surrounded by many "sensitive / restricted areas" which must be avoided. To achieve this, and facilitate the safe arrival of **all aircraft** the following circuit joining procedure is now in operation. This applies to **all aircraft** wishing to land at Westonzoyland airfield.

Aircraft should plan to arrive at the airfield via one of the indicated approach corridors (at 1500 feet AAL) and fly along the **Eastern** side of runway 15/33 (the side farthest away from Westonzoyland village), to announce their presence.

After checking the windsock and maintaining a good lookout for local circuit traffic, descend to be at 800 feet AAL at **point "A" if joining for RW33 or RW 03**, or descend to be at 800 feet AAL at **point "B" if joining for RW 21 or RW 15**. Be aware of power cables 30 ft high, immediately before the threshold, across RW 21.

Be aware that your descent will be over an active circuit so keep a good lookout for (and don't cut in front of) existing circuit traffic.

Radio equipped aircraft are asked to make "blind" calls to "Zoyland Micro Base" on 129.825 on arrival overhead the field. The radio is not manned but you may receive replies from other local traffic. Downwind calls should be made at circuit **Point A if landing on RW 03 or 33**, and **point B if landing on RW 15 or 21**. (Please check the circuit diagram to become familiar with these points).

After landing, taxi to the northern end of RW 33 grass where aircraft can be parked in the open grass area off to the east of the runway. All pilots including members, must book their aircraft in and out using the movements book in the clubhouse. Landing fees for visiting aircraft are £3 and paid in the clubhouse.

Westonzoyland Airfield Departures

Radio equipped aircraft are asked to make "blind" calls to "Zoyland Micro Base" on 129.825 advising of movements around the airfield until airborne and clear of the circuit.

Keep a good lookout and listen out for other circuit traffic. Be aware there may be non radio aircraft joining or in the circuit

Departing RW 33 Immediately turn right towards the river so as to avoid overflying Westonzoyland village.

Departing RW 03 Be aware of power cables 30 ft high across the end of the runway and restricted area on right.

Departing RW 15 Do not fly directly over the bungalow at the end of the runway.

[We hope you enjoy your visit to Westonzoyland Airfield](#)