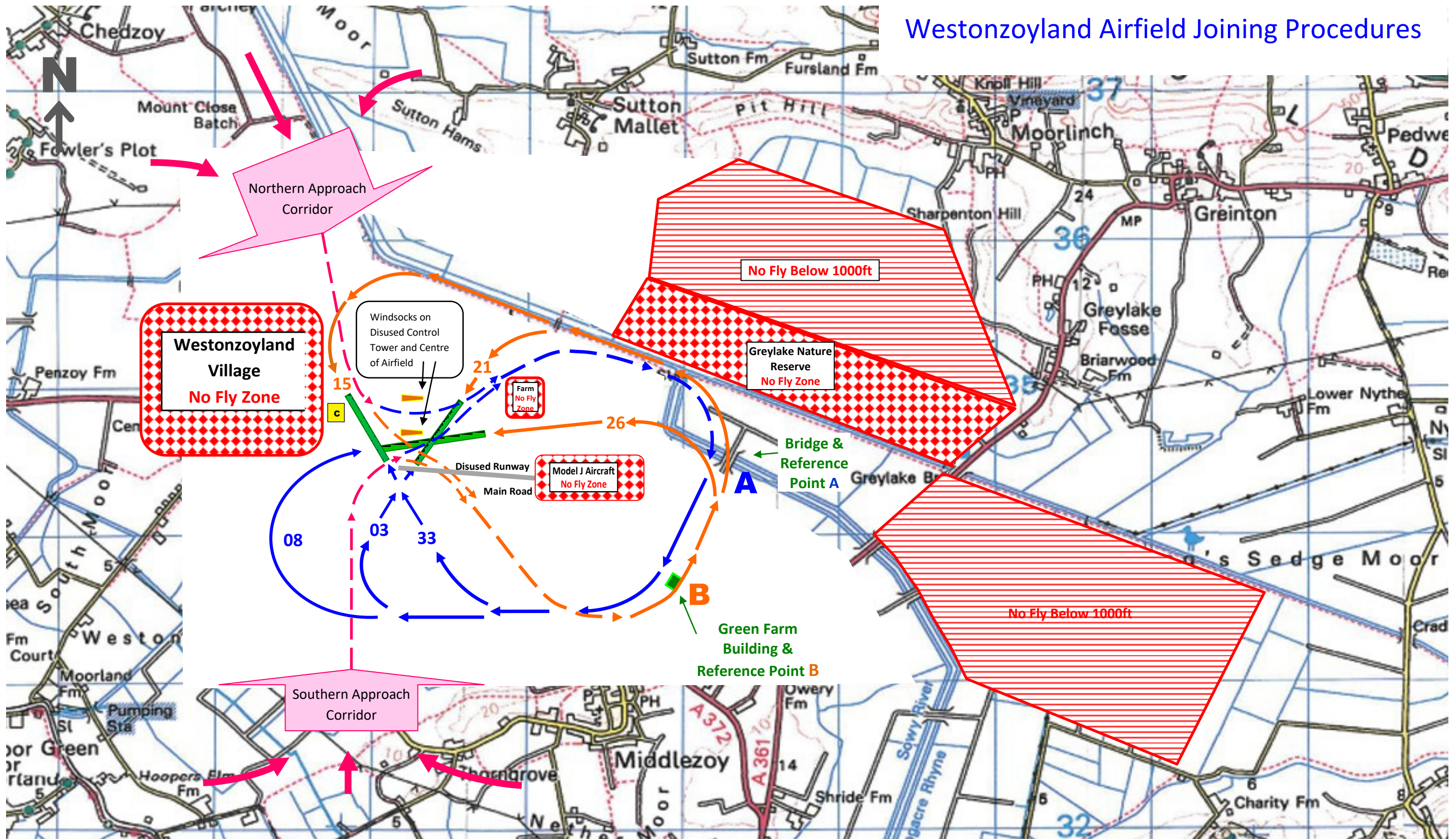


Westonzoyland Airfield Joining Procedures



Radio is unmanned but you may receive replies from other traffic

Aircraft are asked to make 'blind calls to: **"Westonzoyland Traffic"** on 129.830 - Call 5 miles out and on Joining Overhead.

Join Circuit Overhead at 1500 ft Descending (shown as dashed lines — — —) to Circuit Height 800 ft at Point A or B

Downwind calls should be made at: **point 'A' for RH runways 03, 08 & 33** or **point 'B' for LH runways 15, 21 & 26**, then call again on Final Approach